

A series of four overlapping, wavy blue lines in various shades of blue and teal, flowing from the left side of the page towards the right.

Machine Link Quick Serve

Machine Link Quick Serve Software

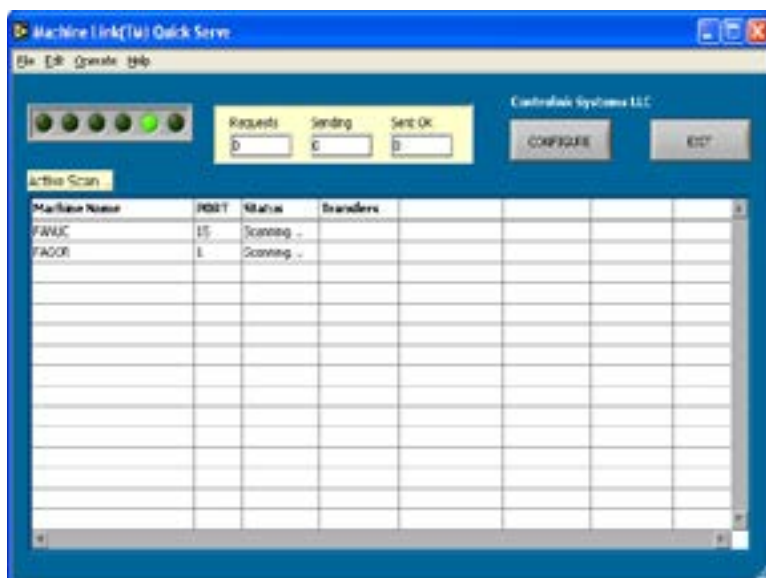
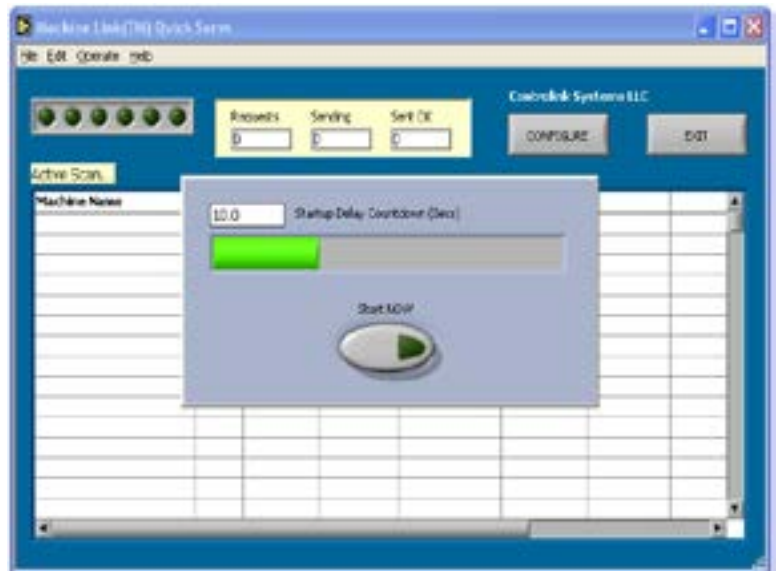
Introduction

Machine Link™ Quick Serve continuously monitors each serial port for file requests, then quickly serves the CNC file directly back to the machine tool control. The machine operator never has to leave the machine or manually interact with the PC since the request is initiated directly from the machine tool control at the shop floor level using simple commands (token or keywords) embedded in the CNC program files.

The software is easy to configure and will communicate with every CNC machine in your shop that supports standard RS-232 serial communications. It supports all standard character sets (ASCII, ISO, and EIA) and will also drip feed most CNC machines. The software runs on Windows XP operating systems and higher (including Vista), and can be configured for an unlimited number of machines.

Machine Link™ Quick Serve runs continuously on a dedicated PC and can serve 32 simultaneous DNC sessions; however, it can monitor many more machines as long as there is a dedicated COM port for the machine tool. This means no waiting – each request will be received and processed immediately. There are many hardware options, including wireless communication ports.

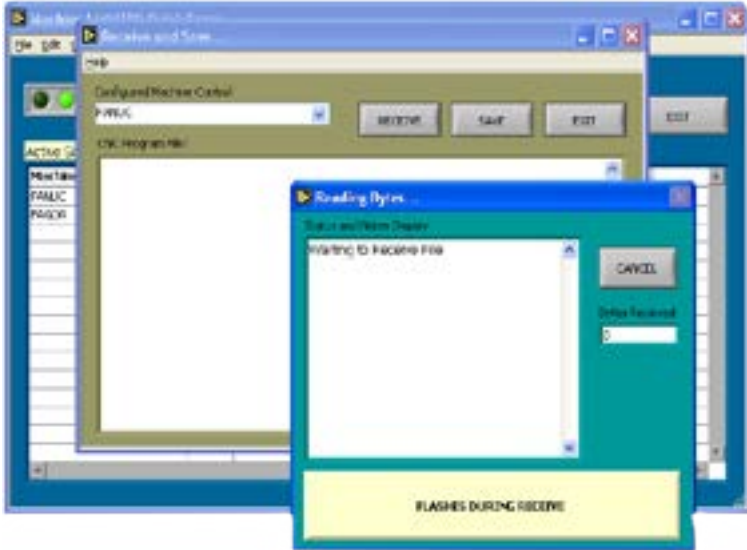
In many installations, Machine Link™ Quick Serve is setup to start as soon as the computer starts, because of this, a startup delay can be configured to ensure that the network hardware is properly configured and ready before Quick Serve starts monitoring the ports for activity.



Quick Serve is very visually oriented. The animated scan lights flash (changing red to green) after each successful pass through the Active Scan Table. All significant information, including the communication parameters and session status, is located directly on the front panel.

The number of Requests, files Sent OK, and the number of current jobs being sent (Sending) are displayed since the program was started. These values can be reset to zero by selecting Edit from the menu bar and then choosing Reset Counters.

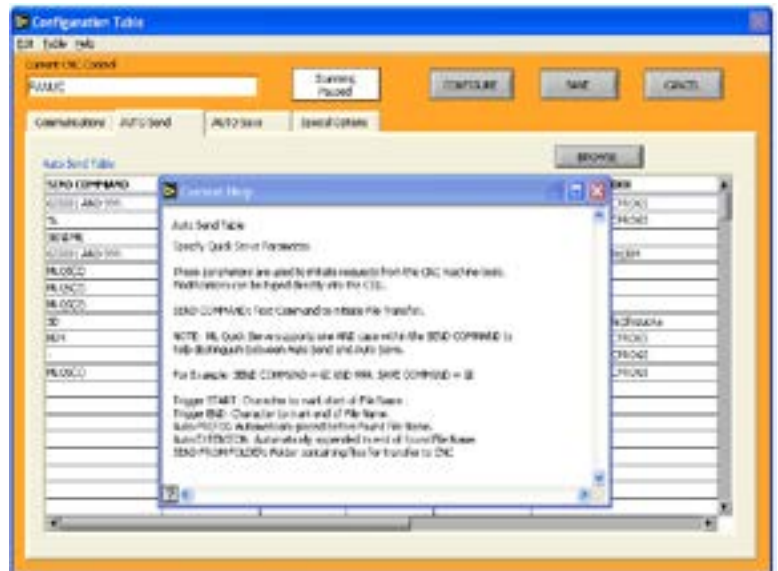
Machine Link Quick Serve Software



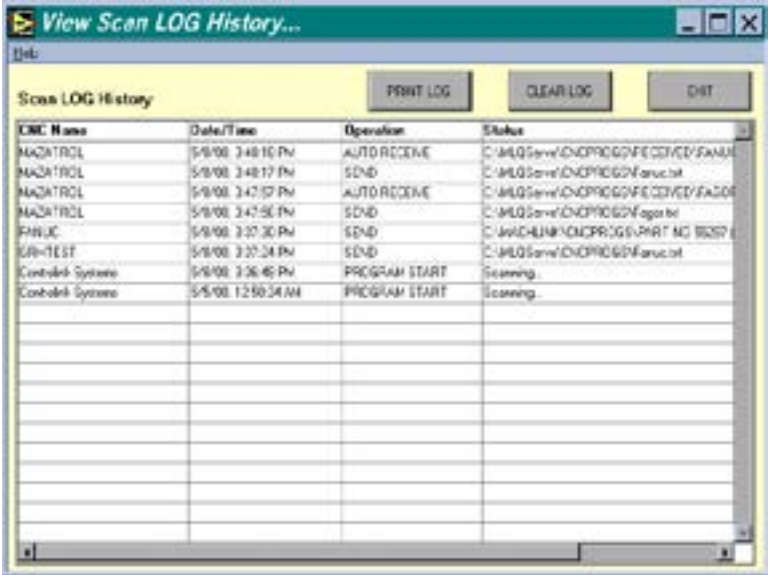
CNC program files can be manually received from any CNC control in the Active Scan List. This is very useful for capturing file requests that are not being recognized correctly during the initial setup stages. From the menu bar select File, then choose Receive from CNC. Select the desired machine and then click [RECEIVE]. Punch out the file or send the request you want to evaluate. The file will be received and displayed.

Quick Serve is loaded with helpful information about its features. From the tool bar select [Help], and then [Show Help] (or press CTRL+H) to activate a help window. When this feature is active, Quick Serve will display a descriptive help message whenever the cursor is moved over a control.

As an example, this help message was displayed when hovering over the Auto Send Table.



Machine Link Quick Serve Software



Quick Serve documents all your transactions in the scan log which can be easily reviewed, cleared, and/or printed. The Scan Log contains useful information (date/time, transaction type, file name, and notes) about each CNC transaction. The log is continuously updated and very useful during the initial setup stages.

Registering your software is quick and easy and does NOT require an Internet connection. However, you will need your Software Code (an example code is shown here). Once you have your Software Code, just phone us at (208) 855-9426, provide us your software code and the Registration Code will be returned to you after purchasing the software. Once you have your Registration Code, enter it and click [Register Now]. The entire process takes only a few minutes.

