

INDEX DESIGNS, LLC

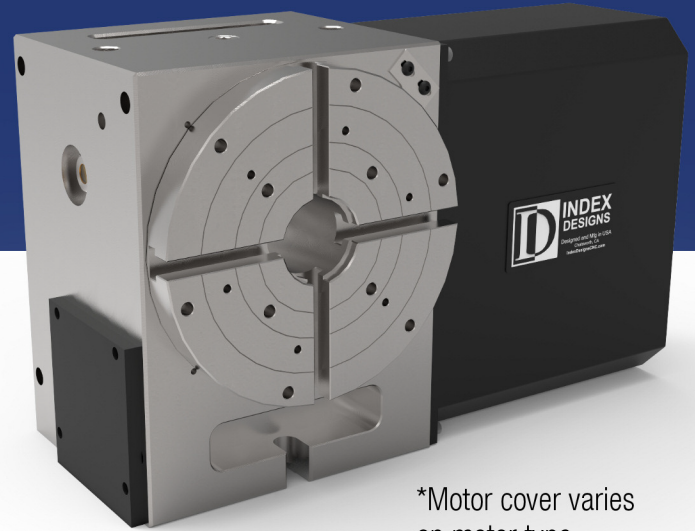
VH Series

Model : VH-8

Our best seller, the VH-8 has a 8.25" (210mm) diameter spindle with a 2.0" through hole. With 225 ft. lbs. of brake torque, the VH-8 maintains a rigid design with dual tapered roller bearings supporting the front and back of the spindle. The centerline is 6.75". The worm wheel is helically cut and throated for increased surface contact between the wheel and worm. This provides longevity and helps maintain the accuracy of the rotary table over time. There is an optional 8" 3-Jaw chuck and adapter plate available as well as a 5C nose piece with either manual or air collet closer.

Features:

- Dual Spindle Bearings
- Dual pre-loaded Worm Bearings
- Heavy duty
- Compact Design
- Mountable both Horizontal and Vertical
- High precision and repeatability
- Precision ground worm
- Bronze worm wheel



*Motor cover varies on motor type

	S.A.E	METRIC
Diameter	8.25 in	210mm
Number of T-Slots	4	4
SPINDLE		
Max Torque	150 ft/lbs	203.4 Nm
Backlash	30 arc-sec	30 arc-sec
Through Bore	2 in	51 mm
Center Height	6.75 in	171.5 mm
Gear Ratio	90:1	90:1
Max Load (Horizontal)	235 lbs	107 kg
Clamp Method	Pneumatic	Pneumatic
Brake Torque @ 120psi	225 ft/lbs	305 Nm
INDEXING		
Accuracy +/-	15 arc-sec	15 arc-sec
Repeatability	4 arc-sec	4 arc-sec
GENERAL		
Air Pressure Max	120 psi	8.3 bar
Table Weight	~180 lbs	~82 kg

Made in the USA



CNCPros International, Inc.
1582 E Bramble Ln.
Meridian, ID 83642

Sales@CNCPros.com
www.FadalCNC.com
Phone: (208) 888-9236

FadalCNC.com
Done. Done Right. Overnight!