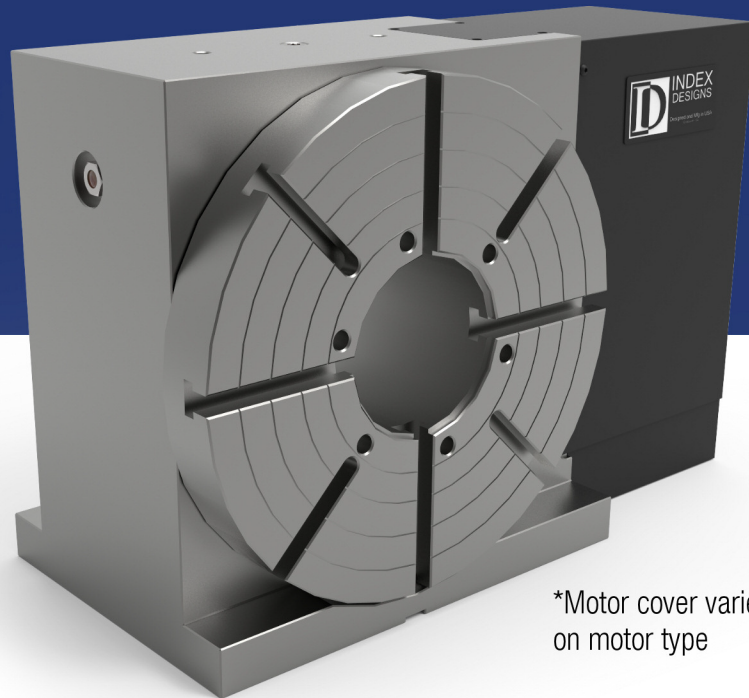


INDEX DESIGNS, LLC

VH Series

Model : VH-15

Increase productivity and reduce setup time with the TR-8, 4th and 5th axis rotary table by eliminating second and third operations. In a single set-up, achieve multi-sided machining capability as well as the ability to tackle tough complex shapes and difficult to reach angles. Both housings were based on our VH8 and still come packed with the same quality. Both spindles and worms have dual bearings. Each worm wheel is helically cut and throated for greater surface contact between the wheel and worm. The B axis housing uses a stronger motor to make up for the extra weight of tilting the A axis housing and maintain accuracy.



*Motor cover varies on motor type

	S.A.E	METRIC
Diameter	15 in	381 mm
Number of T-Slots	8	8
SPINDLE		
Max Torque	450 ft/lbs (Varies with Motor)	610 Nm (Varies with Motor)
Backlash	30 arc-secs	30 arc-sec
Through Bore	5.125 in	130.18 mm
Center Height	8.5 in	216 mm
Gear Ratio	180:1	180:1
Clamp Method	Pneumatic	Pneumatic
Brake Torque @ 120psi	900 ft/lbs	1220 Nm
INDEXING		
Accuracy +/-	15 arc-sec	15 arc-sec
Repeatability	4 arc-sec	4 arc-sec
GENERAL		
Air Pressure Max	120 psi	8.3 bar
Table Weight	~600 lbs	~272 kg

Features:

- Dual Spindle Bearings
- Dual Worm Bearings
- Heavy duty
- Compact Design
- High precision and repeatability
- Variable Feedrate
- Highly intergratable for VMCs.
- Large Through Bore

Made in the USA



CNCPros International, Inc.
1582 E Bramble Ln.
Meridian, ID 83642

Sales@CNCPros.com
www.FadalCNC.com
Phone: (208) 888-9236

FadalCNC.com
Done. Done Right. Overnight!