

INDEX DESIGNS, LLC

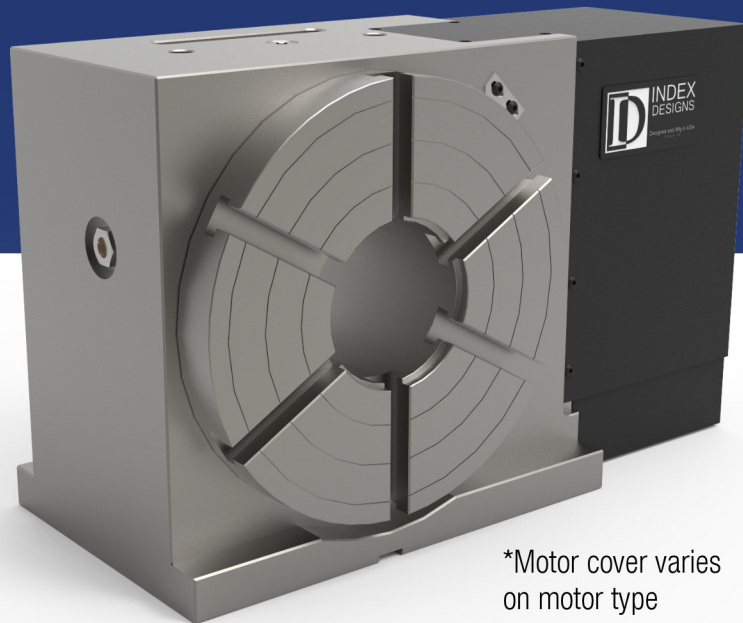
VH Series

Model : VH-11

For medium to large parts, the VH-11 rotary table has an 11" (280mm) diameter platter with a 6.75" center height. A 10" or 12" chuck or fixture can easily be bolted to the table using the six precision T-slots. Its large 4" through-hole can be used for bar feeding and special fixture-locating requirements. The spindle and worm have two bearings for front and back support. As always, the worm wheel is helically cut and throated for greater surface contact between the wheel and worm. There is an optional 10" or 12" manual 3-Jaw chuck and adapter plate available as well as a manual or pneumatic tailstock with matching center height.

Features:

- Dual Spindle Bearings
- Dual Worm Bearings
- Heavy duty
- Compact Design
- High precision and repeatability
- Variable Feedrate
- Highly intergratable for VMCs
- Large Through Bore



*Motor cover varies on motor type

	S.A.E	METRIC
Diameter	11 in	280 mm
Number of T-Slots	6	6
SPINDLE		
Max Torque	250 ft/lbs (Varies with Motor)	338 Nm (Varies with Motor)
Backlash	30 arc-secs	30 arc-sec
Through Bore	4 in	101 mm
Center Height	6.75 in	171.5 mm
Gear Ratio	120:1	120:1
Clamp Method	Pneumatic	Pneumatic
Brake Torque @ 120psi	450 ft/lbs	610 Nm
INDEXING		
Accuracy +/-	15 arc-sec	15 arc-sec
Repeatability	4 arc-sec	4 arc-sec
GENERAL		
Air Pressure Max	120 psi	8.3 bar
Table Weight	~ 340 lbs	~ 155 kg

Made in the USA



CNCPros International, Inc.
1582 E Bramble Ln.
Meridian, ID 83642

Sales@CNCPros.com
www.FadalCNC.com
Phone: (208) 888-9236

FadalCNC.com
Done. Done Right. Overnight!